

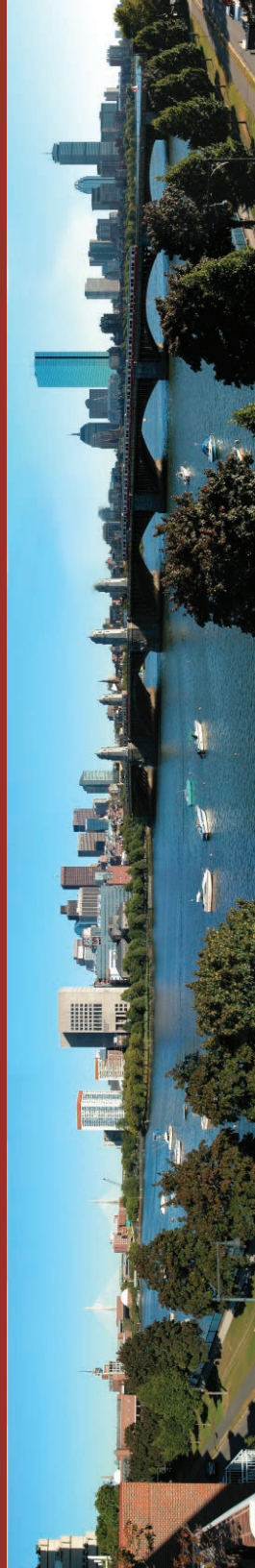


RFs (Top Left to Right): K. Taute, B. Hunter, and I. El Baggari. (Middle Left to Right) S. Rayshubskiy, S. Raayai, and Y. Tao. (Bottom Left to Right) C. Reece.



Director Andrew Murray

[www.rowland.harvard.edu](http://www.rowland.harvard.edu)



Panoramic view of Boston taken from the Institute

Rowland Institute at Harvard  
100 Edwin H. Land Boulevard  
Cambridge, MA 02142 USA

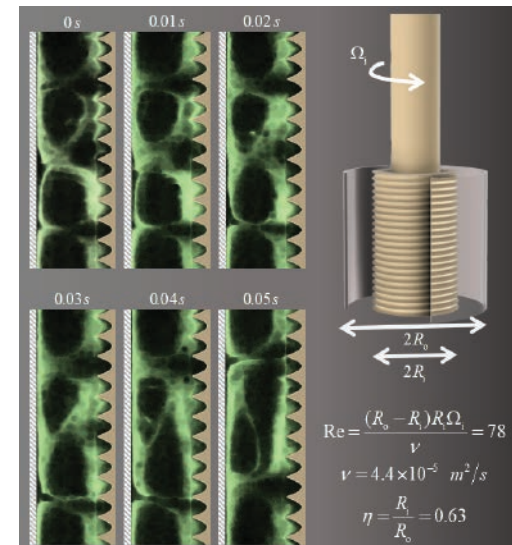
Cover image - High speed, dye visualization of the time evolution of merging of two unstable Taylor vortices into one stable vortex in flow between two concentric cylinders with a smooth, stationary outer rotor and a rotating inner rotor covered with periodic concave textures.

RF S. Raayai

ROWLAND INSTITUTE AT HARVARD

# ROWLAND FELLOWS PROGRAM

[www.rowland.harvard.edu](http://www.rowland.harvard.edu)

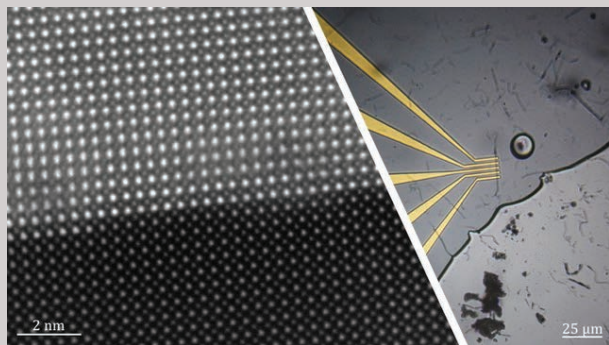


2022

# ROWLAND

The Rowland Institute at Harvard is seeking applications for Rowland Fellowships that commence in the 2022 calendar year. We seek the best young experimentalists in all fields of science and engineering. The Rowland Fellowship program provides an opportunity to establish an independent program within the rich intellectual environment at Harvard.

Dr. Edwin H. Land founded the Rowland Institute in order to foster high-risk, creative research. In 2002, the Rowland Institute became part of Harvard with the mission of advancing the careers of experimental scientists and engineers at an early career stage. In the tradition of Dr. Land, we are particularly interested in young scholars with the potential to establish a ground-breaking research program in their chosen field.

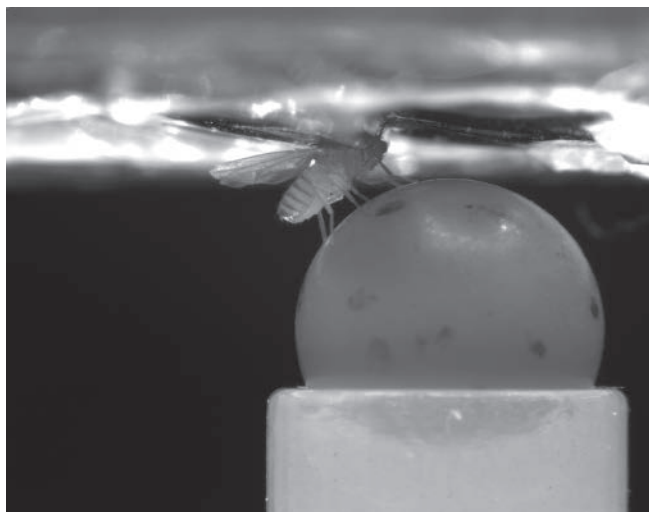


(left) Atomic resolution electron microscopy image of a thin film oxide. (right) Fabrication of an electrical device based on ultra-thin, quasi-1D chalcogenides.

*RF I. El Baggari*

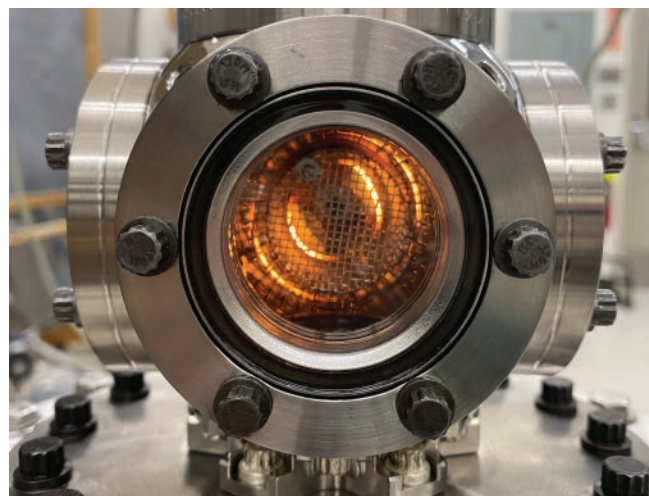
The Rowland Fellowships are restricted to experimentalists at an early career stage (not more than three years beyond the receipt of their doctorate). Fellowship awardees will receive funding for salary and research expenses and are allocated their own laboratory space. The Rowland Institute also provides scientific and technical support from permanent staff.

# FELLOWS



The fruit fly, *Drosophila melanogaster*, is running on a spherical treadmill. In this experiment, the fly's heat sensors are optogenetically stimulated. The head of the fly is fixed in place with a metal platform allowing for calcium imaging of neuronal activity in the fly's brain.

*RF S. Rayshubskiy*



Bespoke pulsing system used to take kinetic snapshots of catalytic systems.

*RF C. Reece*

# PROGRAM

The term of the fellowship is for up to five years, with a flexible start date. The stipend for Rowland Fellows is upwards from \$74,500 per year, depending on the candidate's experience. Fellows must have completed their doctoral degree prior to starting their term.

Instructions for applying to the program can be found on the Rowland website:

[www.rowland.harvard.edu/apply](http://www.rowland.harvard.edu/apply)

The application deadline is Aug. 20, 2021.



Pulsed laser beam entering high-pressure superficial carbon dioxide. The plasma formed produces nanoparticles for catalysis.

*RF B. Hunter*

Questions about the program should be directed to

Dr. Michael M. Burns at: [rf@rowland.harvard.edu](mailto:rf@rowland.harvard.edu)

[www.rowland.harvard.edu](http://www.rowland.harvard.edu)

**Harvard University is an equal opportunity employer and all qualified applicants will receive consideration for employment without regard to race, color, religion, sex, national origin, disability status, protected veteran status, gender identity, sexual orientation, pregnancy and pregnancy-related conditions or any other characteristic protected by law.**